



One Earth Solar Farm

Volume 6.0 Environmental Statement [EN010159]

Volume 3

Figure 11.4: 5km Zone of Theoretical Visibility – panels without screening

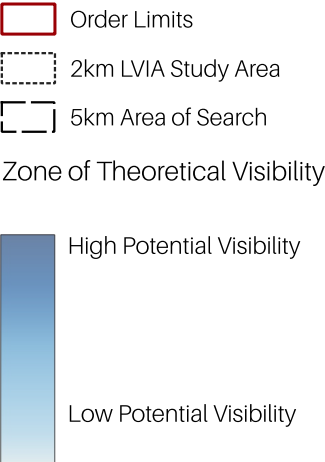
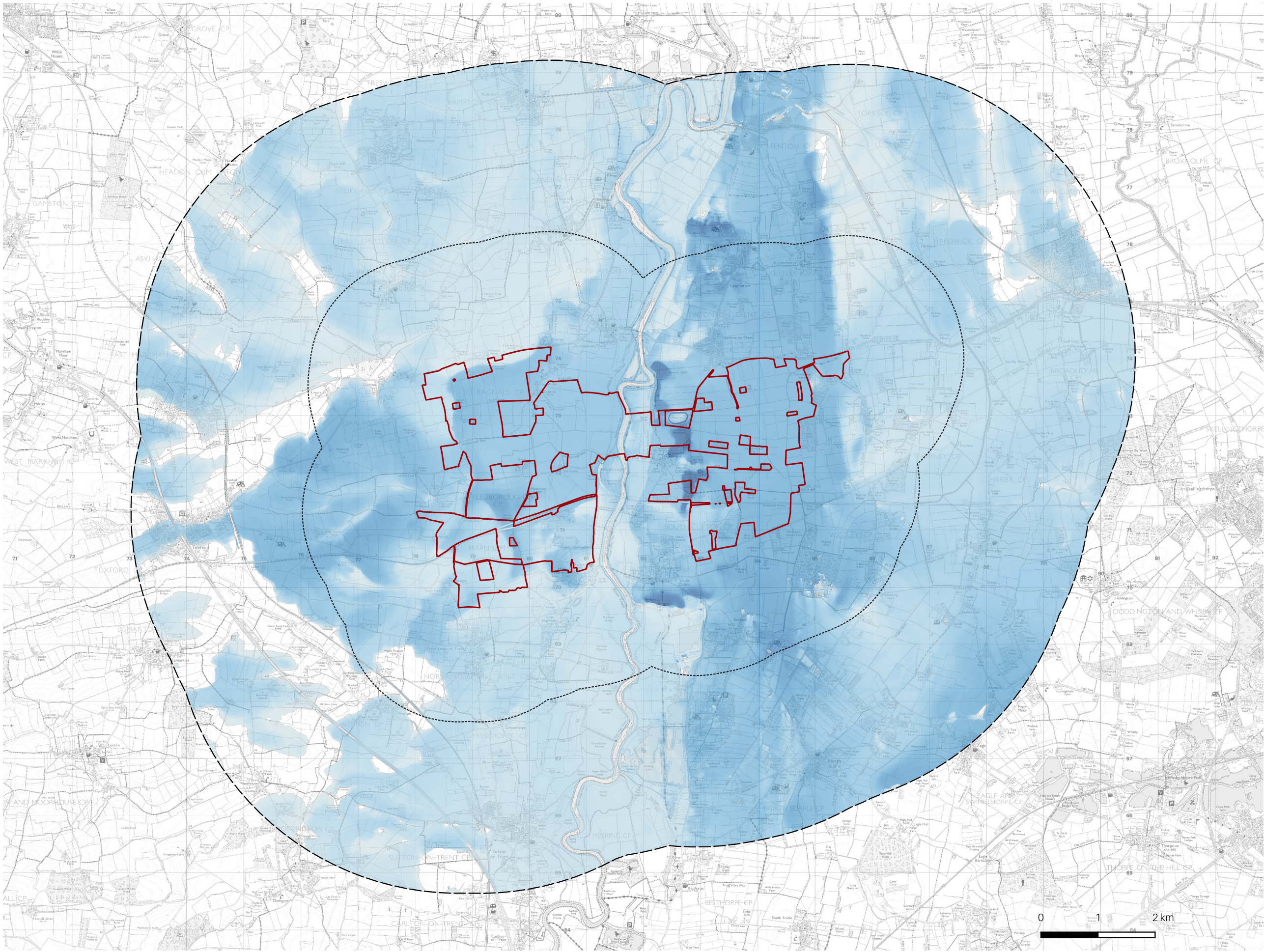
May 2025

Document Reference: EN010159/APP/6.20.1

Revision 02

Infrastructure Planning (Applications: Prescribed Forms and Procedure)

Regulations 2009 - Reg 5 (2) (a)



NOTES

The Zone of Theoretical Visibility (ZTV) has been generated using EA 2m Composite First Return Digital Terrain Model 2022. The ZTV has been generated based upon an observer eye level of 1.60m. It is based on 3.5m and 3.8m high points within the Proposed Development Areas. All points are spaced out evenly on the 50 on 50m grid. All heights mentioned are above ground level (AGL).

Ordnance Survey © Crown Copyright 2025. All rights reserved. Licence number 100022432. Contains public sector information licensed under the Open Government Licence v3.0.



PROJECT	One Earth Solar Farm	DRAWN BY	EJ	DRAWING NO.
DRAWING TITLE	Figure 11.4: 5km Zone of Theoretical Visibility – proposed solar panels without screening [EN010159/APP/6.20/11.4]	CHECKED BY	SG	11.4
CLIENT	One Earth Solar Ltd.	DATE	REV	
		May 2025	C	